

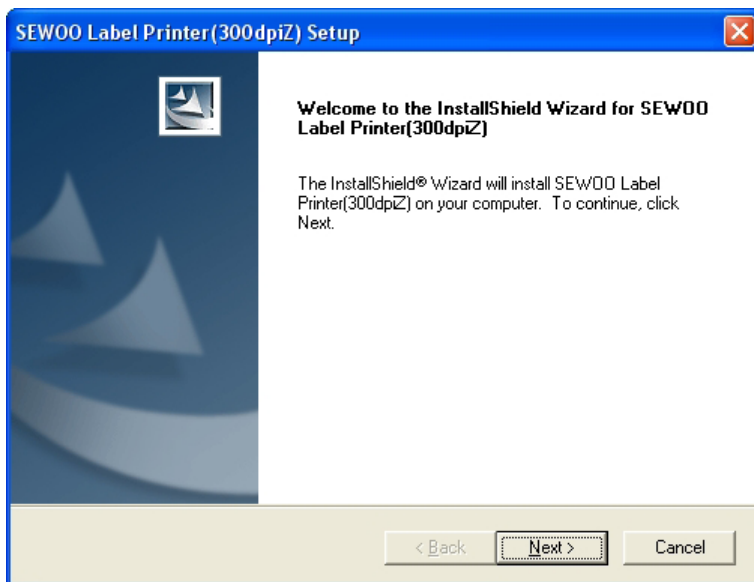
SEWOO Label Printer(300dpiZ)

Driver User's Manual

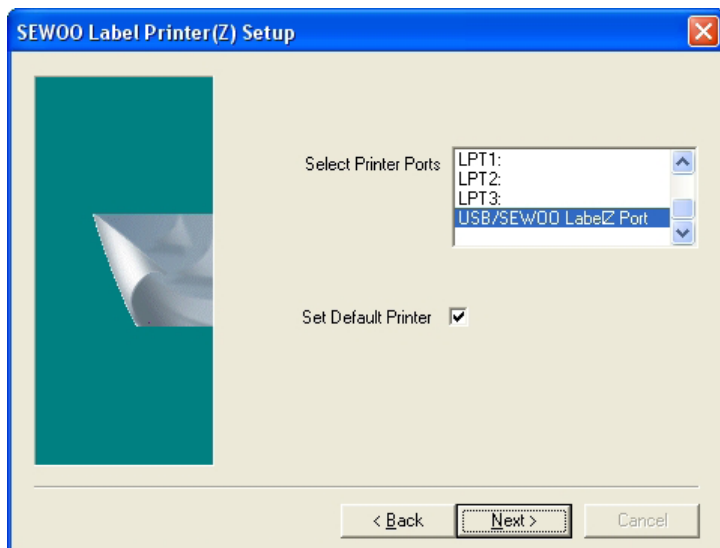


Driver of SEWOO Label printer can not be installed on windows 95/98/ME and less than version 4 of Window NT. The required Windows version is 2000/XP/2003/Vista/Windows 7/Windows 8.

Execute to install SEWOO LABEL PRINTER(300dpiZ). exe with double click.



The setup wizard will show up as above , Click Next to continue or Cancel to exit setup.



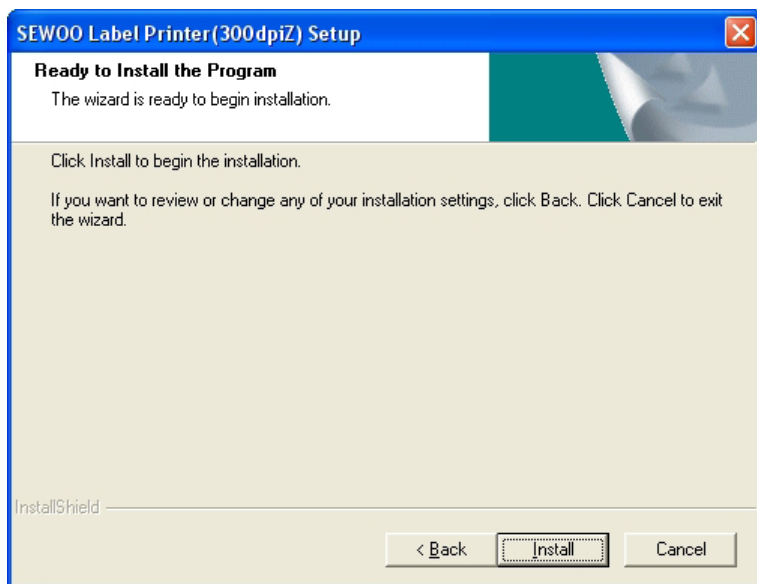
Printer port setup:

The printer will choose the port which has been connected at the moment.
Once the driver has been installed, you can change the port in Printer Property.

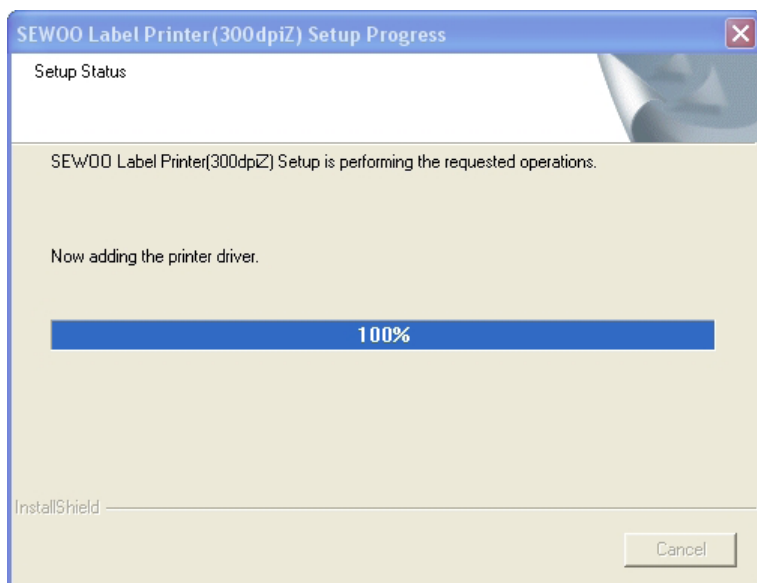
Set default Printer:

SEWOO LABEL PRINTER(300dpiZ) will be set as the default printer. It is possible to change the default printer after driver has been installed.

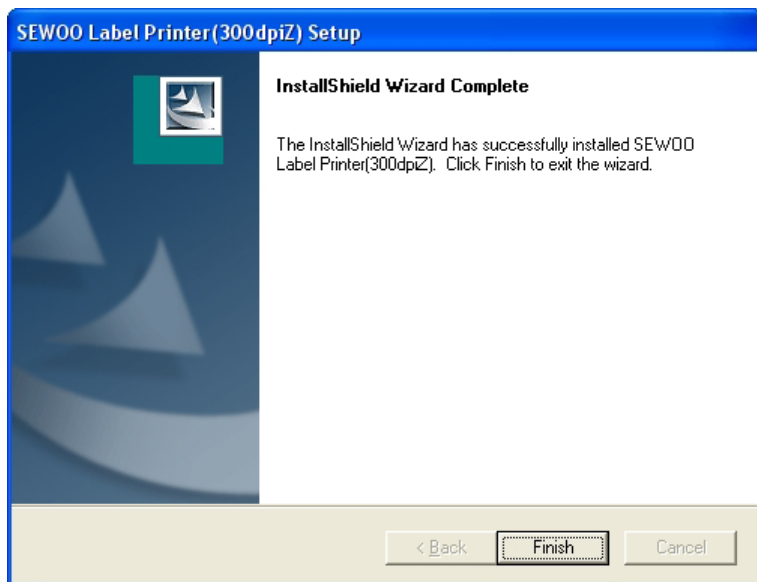
Click Next to continue or Back to go back to the previous page.



Click Install for set up.



Driver is on the process of installing by copying the necessary files on the system.

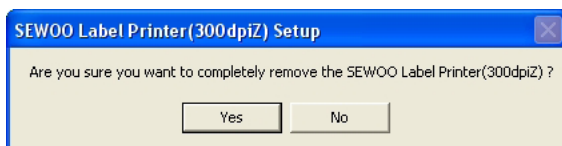


After installation, the program will be completed when clicking Finish button.
Now you are ready to use SEWOO Label Printer(300dpiZ).

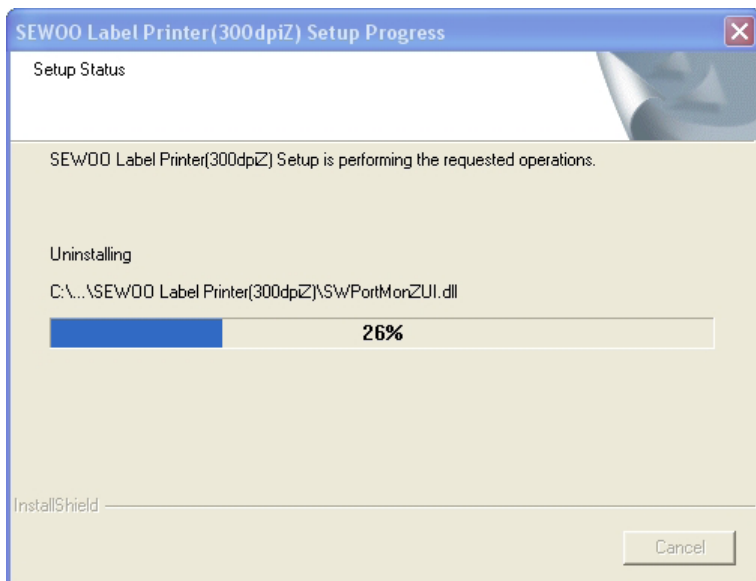
There are 3 routes to uninstall the driver.
Follow the appropriate route for your situation.

1. You can go to Start, and then go to Program. You can see the folder of **"SEWOO LABEL PRINTER(300dpiZ)"** there. When you point it with the mouse, we can see Uninstallation in the right side. Click Uninstallation and the program will execute.
2. If you execute SEWOO Label Printer(300dpiZ).exe again after the driver has been already setup, program will be execute for **Uninstallation**.
3. You can delete the program in the control panel. Find **"SEWOO LABEL PRINTER(300dpiZ)"** and go to the Add/delete program. It will uninstall the program.

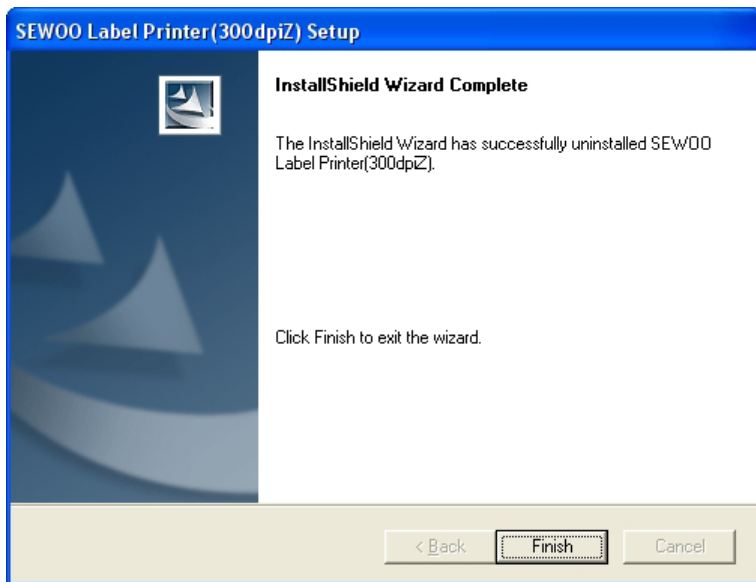
Refer to the task window as below.



Click Yes to continue, click No to stop Uninstallation.

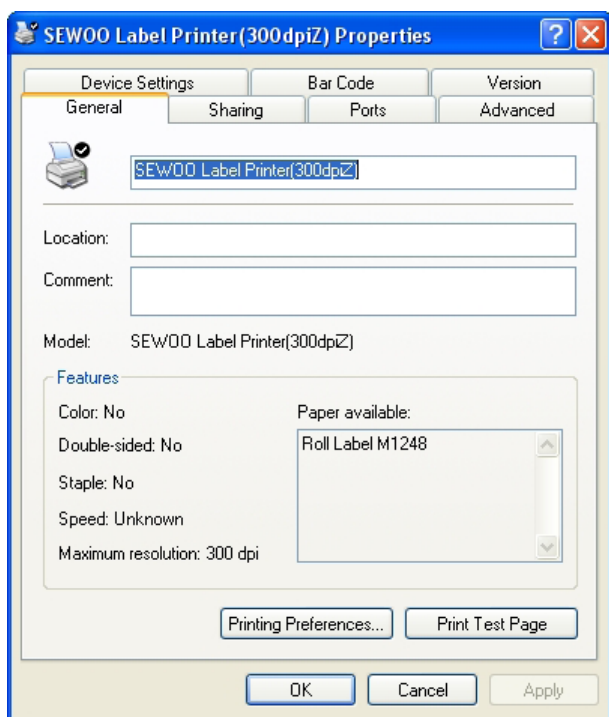


Uninstallation is progressing by deleting related files with driver in the system.

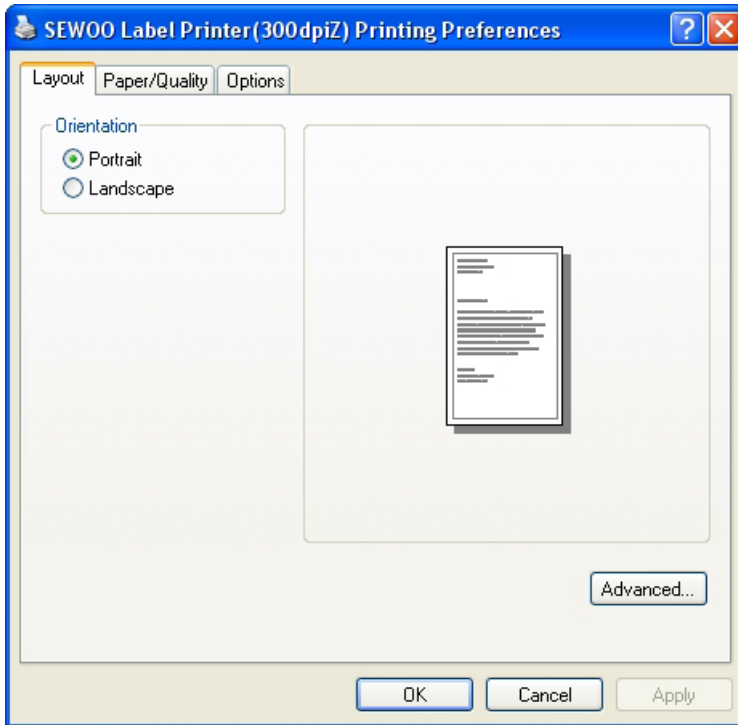


Click Finish to complete SEWOO label Printer(300dpiZ).exe

When you click with right button on mouse in Printer and Fax folder and choose the Printer Property, you will see as follows.



When you click "Printing Preferences" you will see this screen



The screen will come up in the application (e.g. excel) when approaching from File to Print and to Property. However you will not see this screen on any application. If you can not see it in your application, Follow the step explained as above.

Before or after you make documents, you should set as shown in the screen.
Let's have a look how to set for printing step by step.

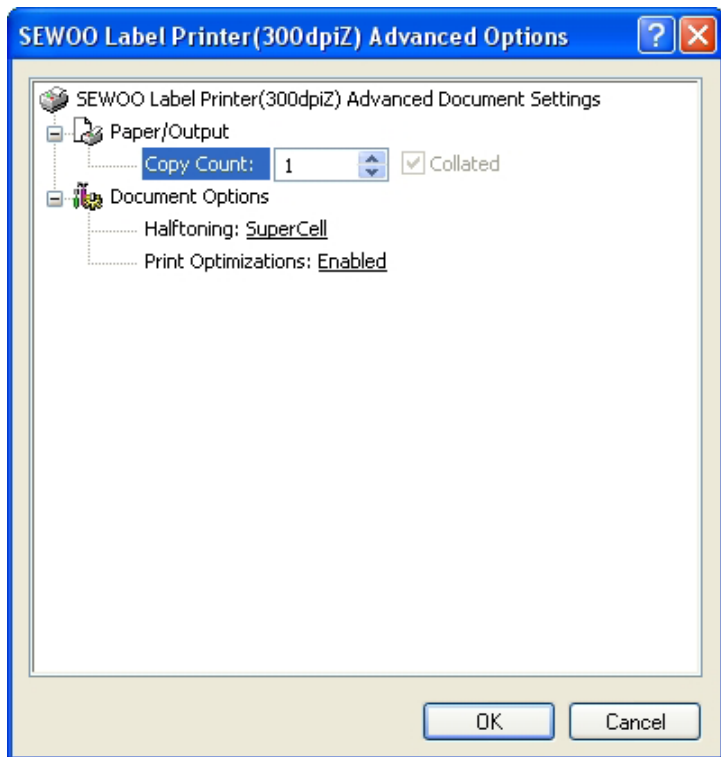
[Direction]

Vertical way: the document will be printed in the vertical way.

Horizon way: the document will be printed in the horizontal way.

The printing can be possible by 105.6mm in the width. If you want to print with wider width, select the horizontal way in Direction. When you select Horizontal way, the width is limited by 105.6mm. Actually the print will be turned up with 90degree rotation.

When you click Advanced button, you will see the screen as shown below.



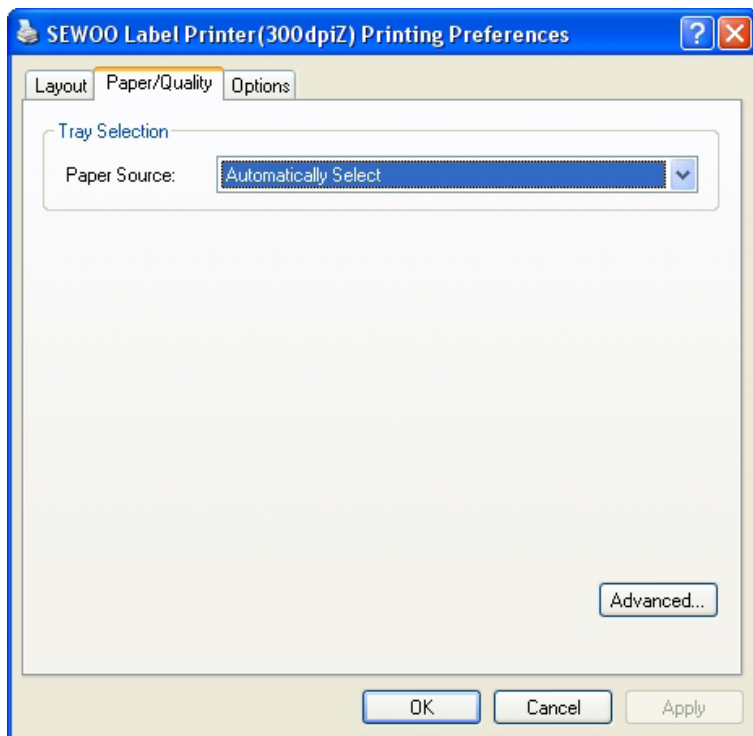
The number of copy:

Select the number of the identical label you would print. If you input the number of printing on your application program, the number you put here will be ignored.

However, if there is no setting option for copy count, you can set it here

- Halftoning: choose 'Auto Select'
- Print Optimization : Choose 'enable'

Click OK or Cancel to go back previous screen and click Paper/Quality.



In Tray Selection, you select **Automatically** on Paper source option.

When you click '**Option**', you will see the screen as below.

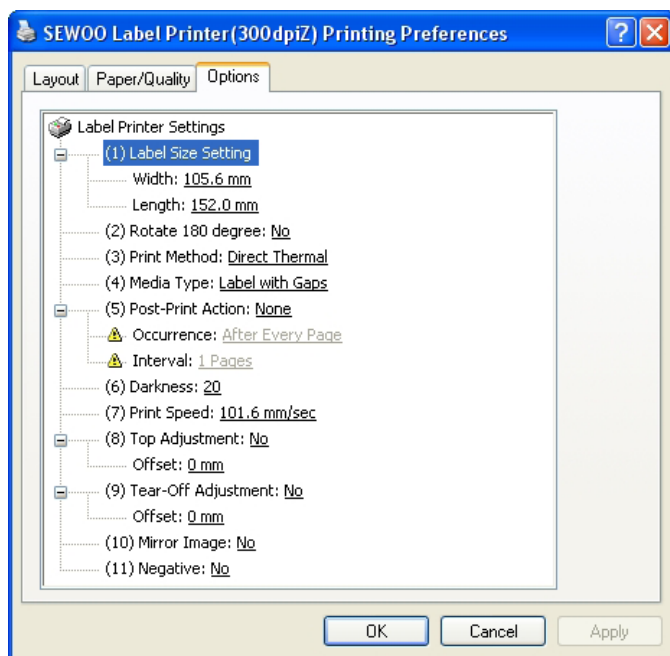
(1) Label Size Setting (Initial value: width = 105.6mm, length = 152mm)

Width: Sets the label's width. Minimum size is 10mm and Maximum size is 105.6mm

Length: Sets the label's length (height). Minimum size is 5mm and the Maximum size is 350 mm.

It is possible only by first decimal in inputting the numerical value.

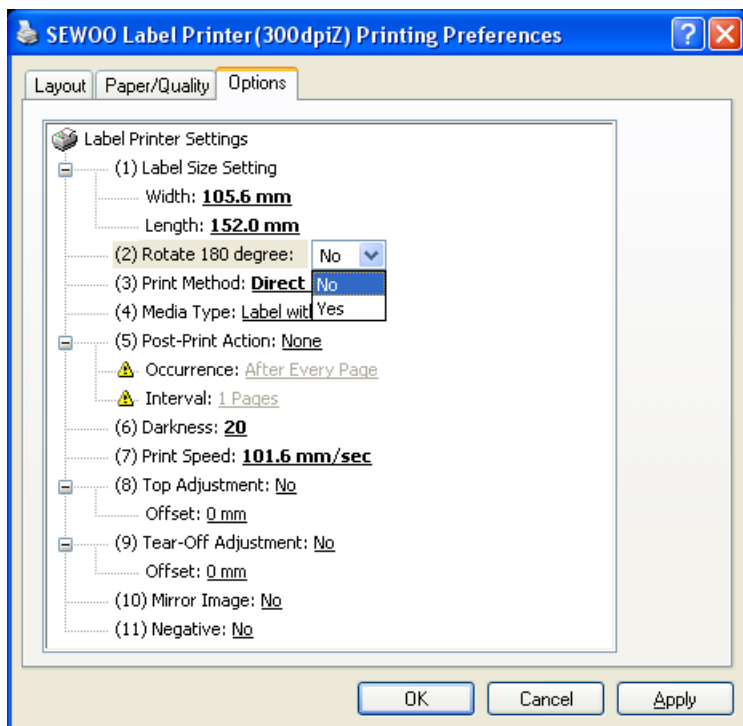
In option Direction described before, if 'width' has been selected, the application will detect it by transposition; it will perceive the value for width here as length value and the value for length as width value.



(2) Rotate 180 degree (Initial value: No)

No: The data to be inputted on the label will be printed in the same direction as the media go through.

Yes: The data will be printed with 180 degree rotation.

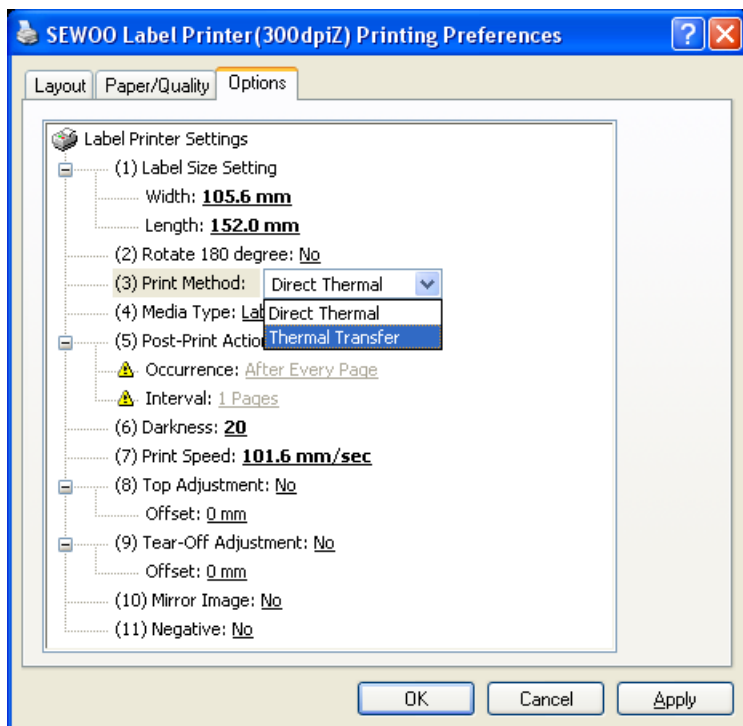


(3) Print Method (Initial value: Direct Thermal)

Direct thermal: Thermal Header prints by heating the label directly.

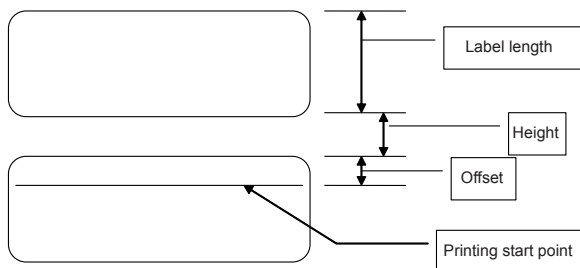
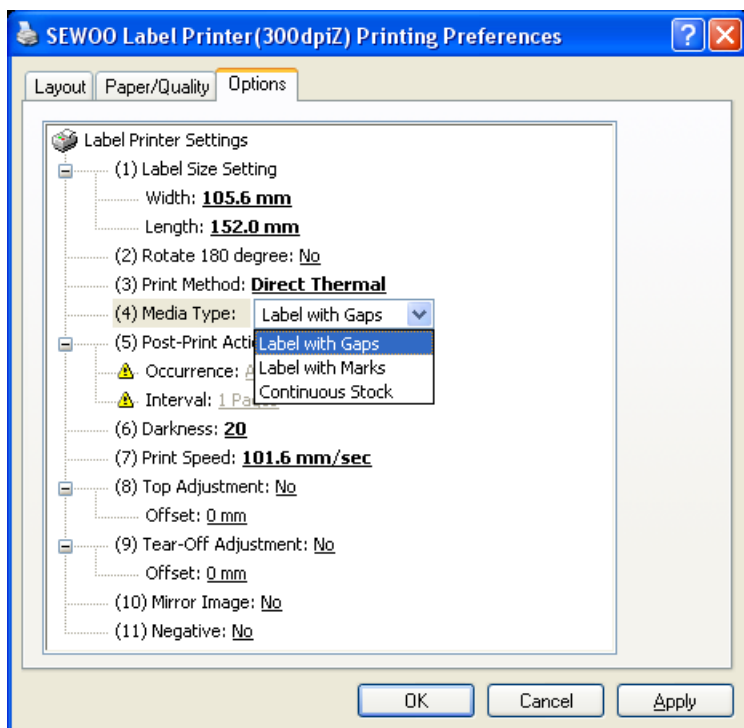
Thermal Transfer: The ink on the ribbon is transferred into the label by heat.

The ribbon is located between Thermal Header and roll label.



(4) media type (default: Label with Gaps)

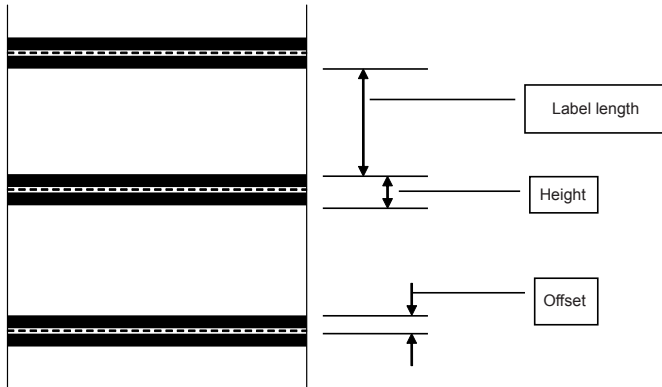
Label with Gaps : There is a gap between each label. The explanation for length and offset will be as follows.



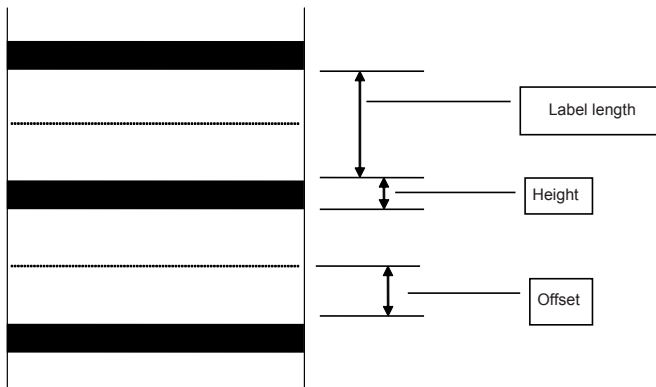
- Note :**
1. Height should not be longer than label length.
 2. If the printing starts from the beginning of the label, set 0.0mm as the offset value.
 3. Height and offset should be measured exactly before setting.
 4. The range of the Height is from 1.5mm to 50.8mm and the range of offset is from 0.0mm to 50.8mm.

Black Mark Label: There is a black mark on the back side of each label. Refer to the picture shown below for Height and offset.

The case that printing start point is located inside the black mark is shown as follows.



The case that the printing start point is outside of black mark is as follows.



- ⚠ Note:**
1. The range of height is from 1.5mm to 50.8mm and the range of offset is from - 50.8mm (with minus sign) to 50.8mm.
 2. Height and offset should be measured exactly before setting.

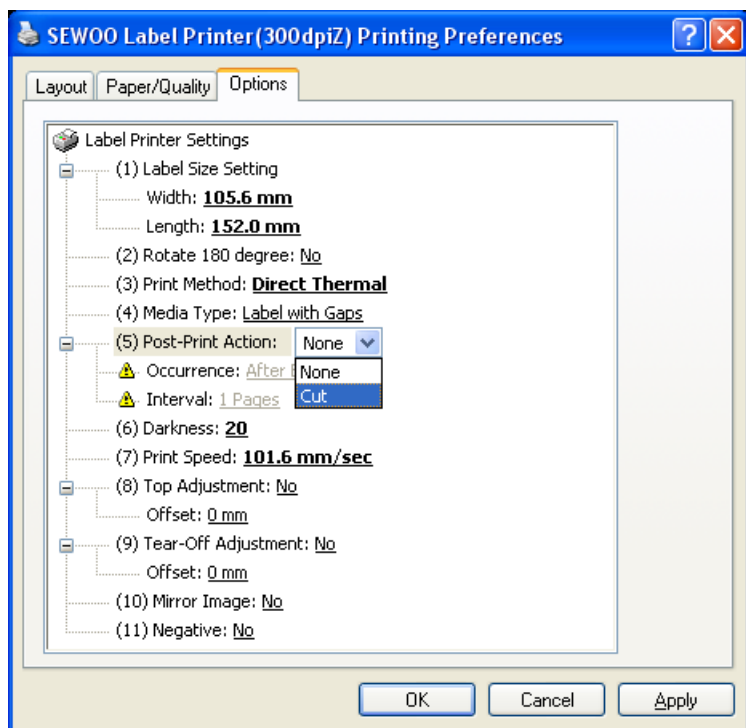
The use of continuous stock: Do not use the value for height and offset.
The stock will be printed continuously with the same length as the stocks are.

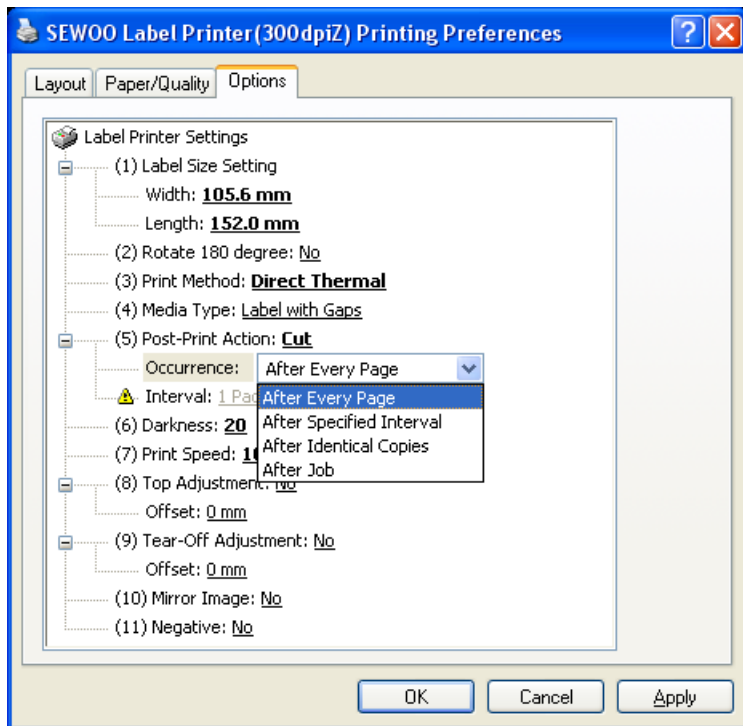
- Note :**
1. Height should not be longer than label length.
 2. If the printing start from the beginning of the label, set 0.0mm as the offset value.
 3. Height and offset should be measured exactly before setting.
 4. The range of the Height is from 1.5mm to 50.8mm and the one of offset is from 0.0mm to 50.8mm.

(5) Post-Print Action (Initial value: None)

None: After completion of printing, the printer will stop.

Cut : When you select 'Cut', you will see different options in Occurrence.

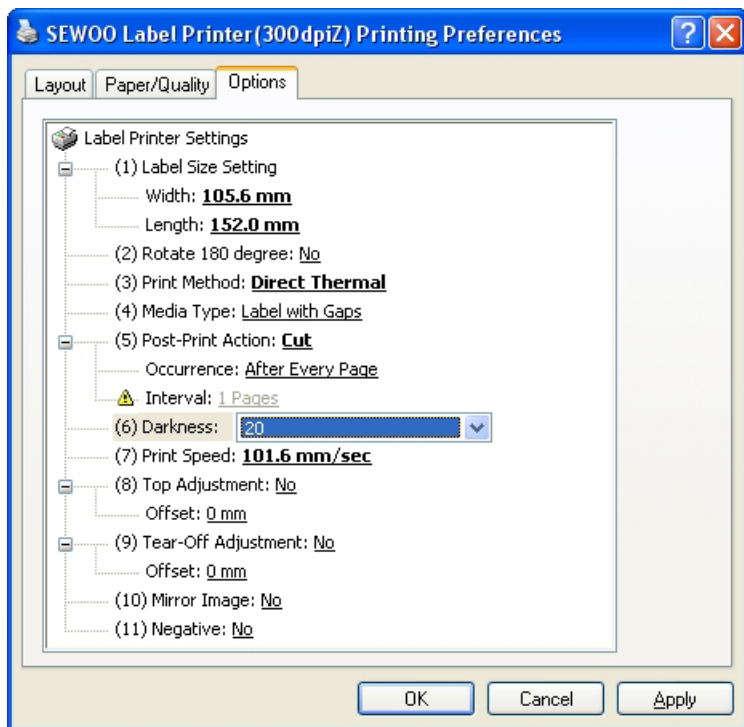




- **After Every Page:** Printer will cut every single piece
- **After specified Interval:** You should set the interval which will tell when the cutting should be done. If you input 3, the label will be cut after every 3 pieces.
- **After Identical copies:** When you print certain number of copies with the same data, the printer will cut at the end of identical copies. For instance, if you print 3pieces of the same data firstly and 4pieces of another same data later, cutting will be done twice; after 3copies and after 4copies.
- **After Job:** The cutting will be done only at the end of printing
- **Freed Adjustment:** After printing, the label should be delivered into the location where the cutter is. Since the printer cutter is located 12.5mm ahead (default value) from the point of printing, the label should come out 12.5mm more as well. If you use other printers or the cutting location is not appropriate to the printing, this number should be adjusted to fit. The scope is from 8.8mm to 16.3mm.

(6) Darkness (default value: 20)

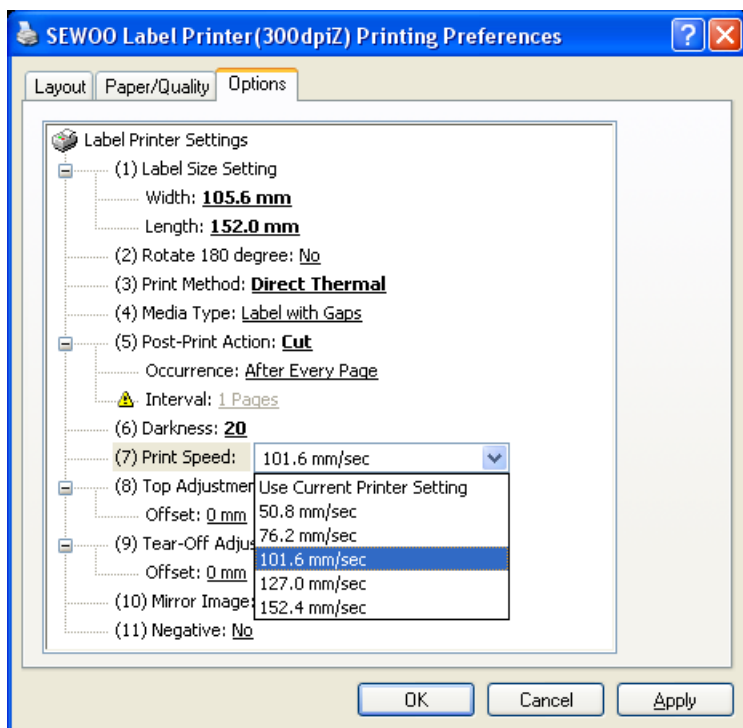
The scope is from 0 to 30



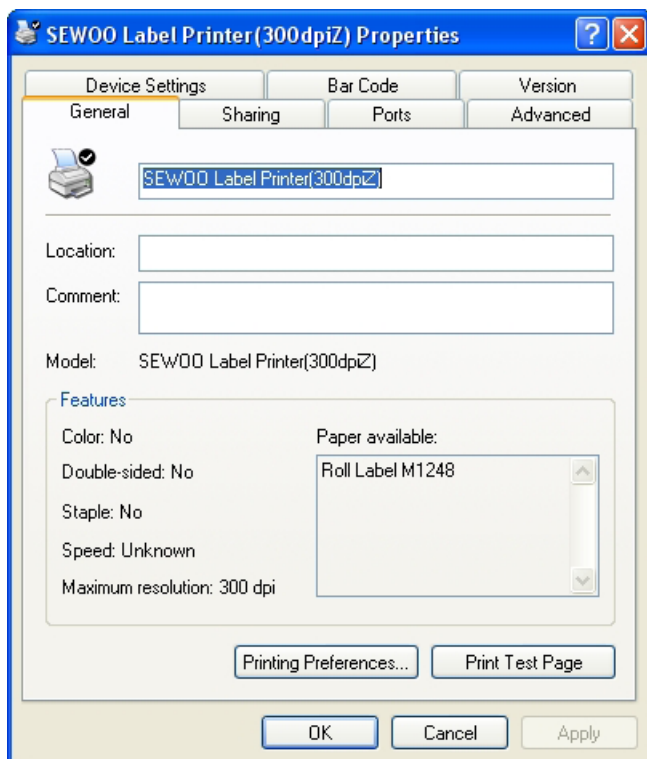
(7) Print Speed (default value: 101.6mm/sec)

These options are 50.8 mm/sec, 76.2 mm/sec, 101.6 mm/sec, 127.0 mm/sec, and 152.4 mm/sec.

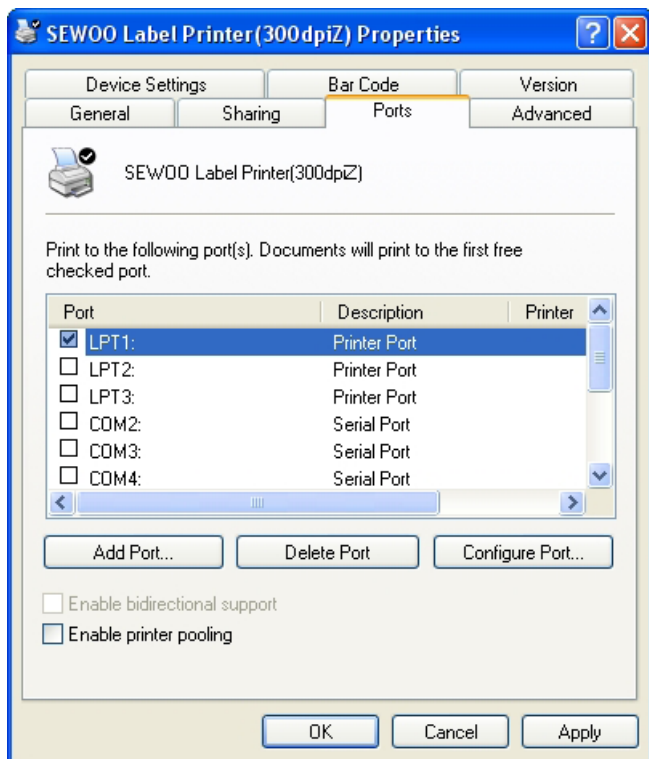
The method for printer setting related to the application program has been described. Let's go to the next step to set port. From the first screen popped up, click port section.



You will see the screen below.



If your printer is connected to LPT:1, click the box of LPT1 and press OK and Apply.





J. STEPHEN Lab., Ltd.

374-2, Gajang-dong, Osan-si, Gyeonggi-do, 447-210, Korea
TEL : +82-31-459-8200 FAX : +82-31-459-8880
www.miniprinter.com